

2022

Milwaukee  
Christian Center

# ANNUAL REPORT



Building Strong Neighborhoods  
Full of Opportunity



# Message From Our Executive Director

---

Dear Friends,

An annual report is truly an opportunity to say thank you to the people and organizations that have helped Milwaukee Christian Center continue to make a difference in our community. Our mission has remained steadfast—to build strong neighborhoods full of opportunity. We have been fortunate to witness incredible resilience, strength, and hope through individuals and families served by our core programming that includes food security, older adults, housing, youth development, and community organizing in the Muskego Way neighborhood. It's been a year since most programs returned to in-person services and it's been wonderful to see over 7,200 individuals and families connect again over meals, food distribution and programming in 2022.

MCC is blessed with a talented and committed staff. Each and every day we have people who commit to our mission and vision for creating a vibrant community. Their passion and drive helps us learn from each other and the community as we engage with the work in front of us. I'm also grateful for the board that guides this organization as they care about our focus. They work to generate resources on our behalf and share their expertise in ways that are instrumental to garnering the community support needed to move forward.

Finally, I am filled with gratitude for the donors, partners and community support that makes all we do possible. There are a multitude of organizations to lift up and we do not take for granted those of you who choose to support us and for that we are thankful.

What's ahead of us in the coming year? Ultimately, we are filled with optimism and determination. We recognize there is still much work to be done and we remain steadfast in our resolve to create a community where every individual can thrive. Together we will continue to do so, building bridges, fostering compassion, and empowering one another. Thank you for helping us have a lasting impact in the lives of countless individuals and families.

Respectfully,

Karen W. Higgins  
Executive Director



**“Our mission is to remain steadfast—to build strong neighborhoods full of opportunity.”**

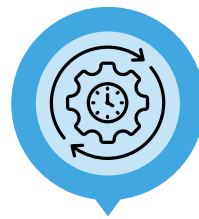
# Our Mission

---

Milwaukee Christian Center builds strong neighborhoods full of opportunity.

# Our Values

---



## COMMUNITY

We believe opportunities grow when everyone in our community joins in the work. We are stronger with the commitment of diverse people, partners and systems working together.

## FOUNDATION

Our foundation is in the communities we serve. Individuals who deeply understand the communities we serve provide invaluable leadership to the broader MCC community.

## COLLABORATION

We believe it takes many partners and people working together for our communities to thrive.

## ENDURANCE

We believe that consistency matters. We are committed to delivering reliable, quality programs led by dedicated individuals.

## ADAPTABILITY

We believe that for efforts to endure and be effective, they must adapt and evolve. We strive to continuously improve in response to the needs and strengths of our community.



# Andrew's Story

---

When Andrew came to the Milwaukee Christian Center as a YouthBuild Team Member, he felt like it was his last chance to succeed. He had the drive but was facing barriers that held him back including the loss of his drivers license, fines, and recently being dismissed from a different workforce development program.

**“Those types of struggles. . . are the types of struggles that stop really good people from doing really good things and they stay in the same situation.” - Andrew**

Because of the support, encouragement, and skills he gained from YouthBuild, Andrew is now skilled in the trades, is financially stable, owns his own landscaping firm, and has a bright future ahead of him. Andrew plans to use his success to help other young adults on the same path through mentorship and employment; further strengthening our neighborhoods.

**“Without the Milwaukee Christian Center. . . I do not think that I would have been able to get to where I am now because I could not have seen it as being possible” - Andrew**



# Food Pantry Success Story

---

When Daniela, a mother of 4, came to the MCC Emergency Food Pantry she was facing homelessness after her home burned down.

However, after connecting with staff at MCC's Emergency Food Pantry, Daniela was given not only the food she originally came for, but numerous resources to help her family find stability. MCC's Emergency Food Pantry Staff provided one-on-one support and were able to help her navigate the resources in Milwaukee, getting her connected with 211 social services who were able to obtain a hotel stay for the family.

During this time, MCC staff was able to supply Daniela with hygiene supplies and food that was appropriate for living in a hotel including pre-cooked meat, cans with pop-tops that could be easily opened and meals that were able to be prepared with only a microwave. Daniela was able to get connected to a more permanent, stable house.

Now, Daniela and her family are safely housed and only come to the Emergency Food Pantry once a month for the food items she needs for her household that helps stretch the use of her budget.



# Core Programs

Milwaukee Christian Center approaches our work through five core areas: housing, youth development, older adults, food security, and resident led community organizing in the Muskego Way neighborhood – serving over 7,000 people each year. What began with American Baptist roots providing outreach to immigrants in 1921, MCC now serves youth, families, and older adults of all races, ethnicities, religions, and ages throughout Milwaukee County.

## Building Strong Neighborhoods Through:

### YOUTH DEVELOPMENT

Empowering young people to succeed in school, the workplace and the community through Violence Free Zone, after school and summer Youth Development programs

### FOOD SECURITY

MCC's Food Pantry provides food to 1,000+ adults and children each month, and connects families to supports needed to become self sufficient

### OLDER ADULTS

Offering older adults opportunities to remain healthy, in their homes, and vitally connected to the community through supportive, nutrition, health and wellness and recreational services

### MUSKEGO WAY FORWARD

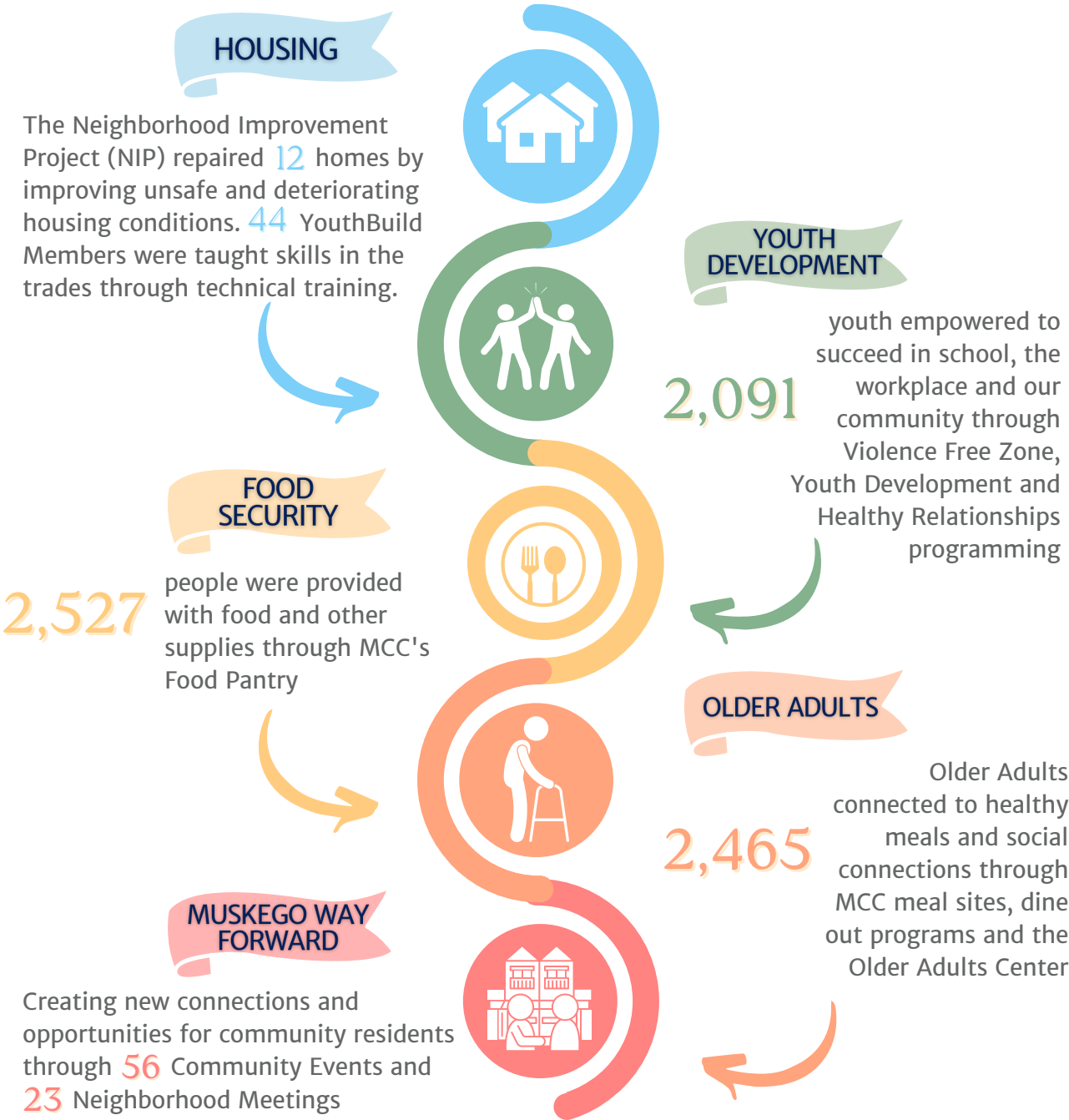
Resident driven revitalization effort focuses on the Muskego Way neighborhood that spans from 16th Street to 27th Street and Greenfield Ave to Becher Street

### HOUSING

Making homeownership possible by building new homes, making needed repairs for low income homeowners, and training young adults in the trades

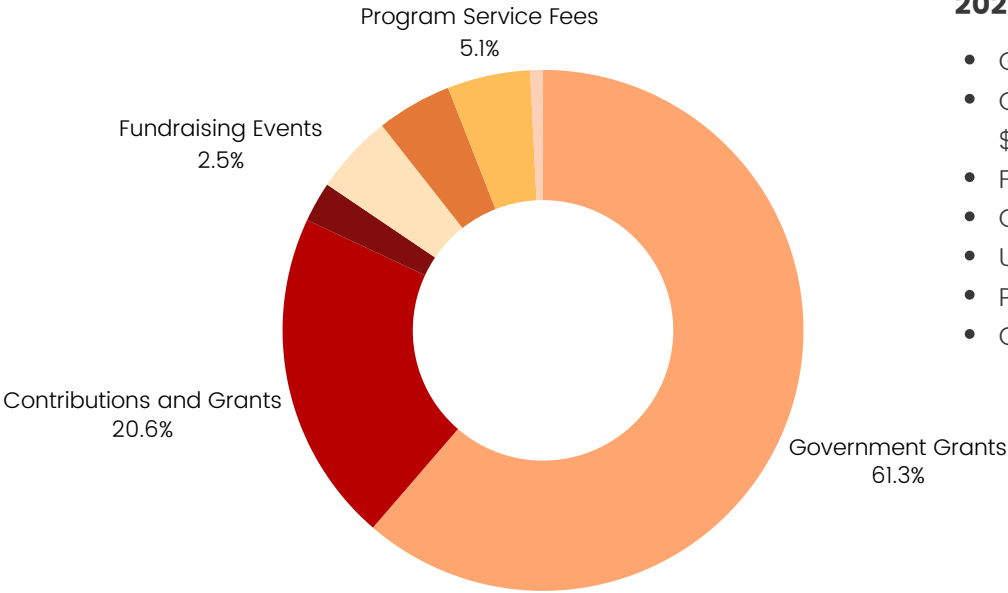


# Total Served



In 2022, MCC served more than 7,200 individuals through our programs focused on building strong neighborhoods full of opportunity.

# By the Numbers

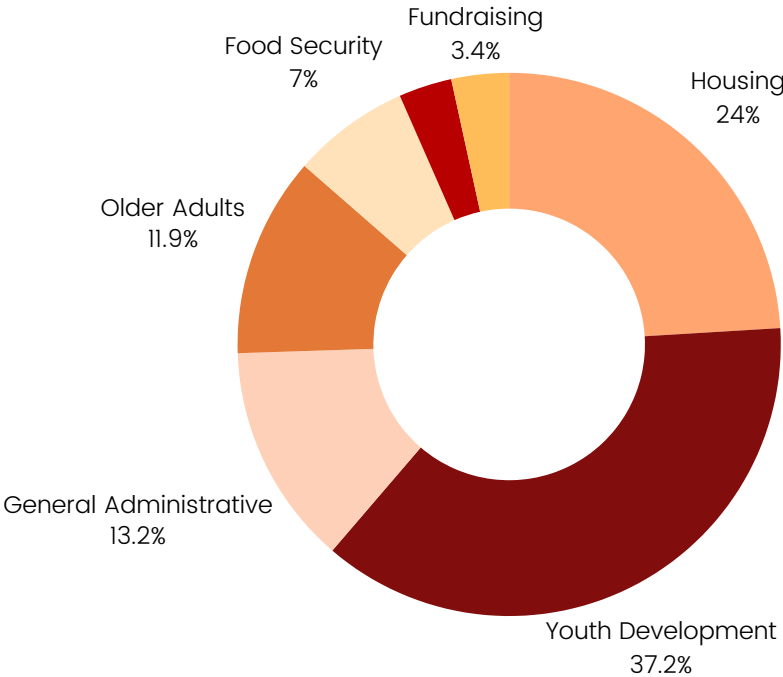


### 2022 REVENUES

- Government Grants \$2,747,818
- Contributions and Grants \$924,644
- Fundraising Events \$111,615
- Contributions In Kind \$221,440
- United Way \$208,987
- Program Service Fees \$230,681
- Other Revenue \$35,497

### 2022 EXPENSES

- Housing \$1,104,786
- Youth Development \$1,711,447
- General Administrative \$606,578
- Older Adults \$548,272
- Food Security \$321,294
- Program Service Fees \$230,681
- Other Revenue \$35,497





# Community Support

## Major Donors \$5,000+

- American Baptist Home Mission Society
- American Endowment Foundation
- AmeriCorps
- Anonymous Donors
- Bader Philanthropies
- Karl & Nancy Byleen
- CBDG Milwaukee
- Charles R. O'Malley Charitable Lead Trust
- Employ Milwaukee- US Department of Labor
- Forest County Potawatomi Foundation
- Greater Milwaukee Foundation, Inc
- Green Bay Packers Foundation
- J.H. Findorff & Son Inc.
- Lynde & Harry Bradley Foundation
- Milwaukee County
- Milwaukee County Department on Aging
- Milwaukee Public Schools
- Mount Olive Evangelical Lutheran Church
- Northwestern Mutual Foundation
- Otto Bremer Trust
- Richard & Ethel Herzfeld Foundation Inc.
- Rocket Mortgage
- The Catholic Community Foundation
- United Way of Greater Milwaukee and Waukesha County
- University of Wisconsin-Madison Division of Extension
- WE Energies Foundation
- Zilber Family Foundation
- Zion United Church of Christ

## Celebration of Strong Neighborhood Sponsors

### Platinum Sponsor

Northwestern Mutual

### Gold Sponsors

- Bader Philanthropies
- BMO Harris Bank
- Educators Credit Union
- Findorff
- Old National Bank
- O'Neil, Cannon, Holloman, DeJong & Laing

### Silver Sponsors

- CG Schmidt
- Forward Community Investments
- Tabak Law LLC
- Town Bank

### Opportunity Sponsors

- ALLCON
- Brandon's Toolshed
- Dawes
- Dennis & Sue Stappas
- Dr. Norman Bubendorf
- Great Midwest Bank
- Gruber Law Offices
- Hintz Giuffre CPA's
- Joan & Peter Bruce
- Johnson Financial Group
- Mortenson
- Mutual of America Financial Group
- Robertson Ryan & Associates
- Rozga Funeral & Cremation Services
- Stamm
- The Higgins Family



# THANK YOU



We could not approach the work we do without the support of our partners, community leaders, and neighbors. Thank you for helping us build strong neighborhoods full of opportunities for all.



+414-645-5350



807 S 14th Street Milwaukee, WI 53204



[www.mccwi.org](http://www.mccwi.org)



Milwaukee Christian Center

